

TN Normae Series

Fearless the darkness All in your eyes

Handheld Thermal Binoculars



TN Normae Series

TN follows classic binocular design, greatly reducing the fatigue feeling of long-time observation. It adopts high-sensitivity VOx uncooled IR detector, bring you high quality imaging and immersive observation experience with full color OLED 1024×768 high-definition display. A variety of functions to meet all your needs, such as taking photos, videos, WIFI, laser ranging, GPS, compass, etc.



Ergonomic design Easy observation

Binocular design, greatly reducing the fatigue feeling of long-time observation; Adjustable interpupillary distance between 60mm~70mm, Catering to different group of people; Ergonomic design, raised buttons can be quickly recognized by touch even in total darkness.



Quick location All new experience

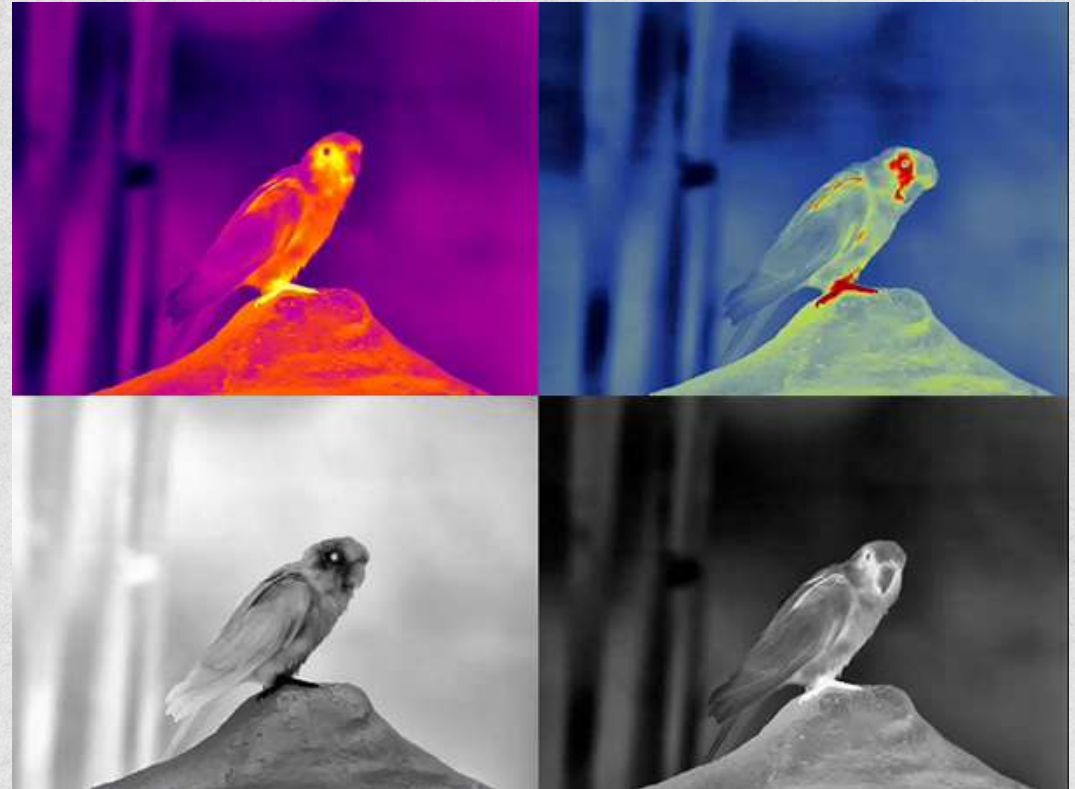
In the dark, laser ranging ensures accurate location with distance information



- Detection Range **3000m**
- Accurate Range **600m**
- Accuracy **±1m**

High Quality Imaging In Day and Night

Up to 640 × 480 VOx uncooled IR resolution and 50Hz image frame rate, ensure the observation of moving target smoothly.



Full-color OLED display

1024 x 768 Full-color OLED, High contrast, image details boost, Improving viewing comfort.



HD 1024 x 768 Full-color OLED Display



720x540 LCOS Display

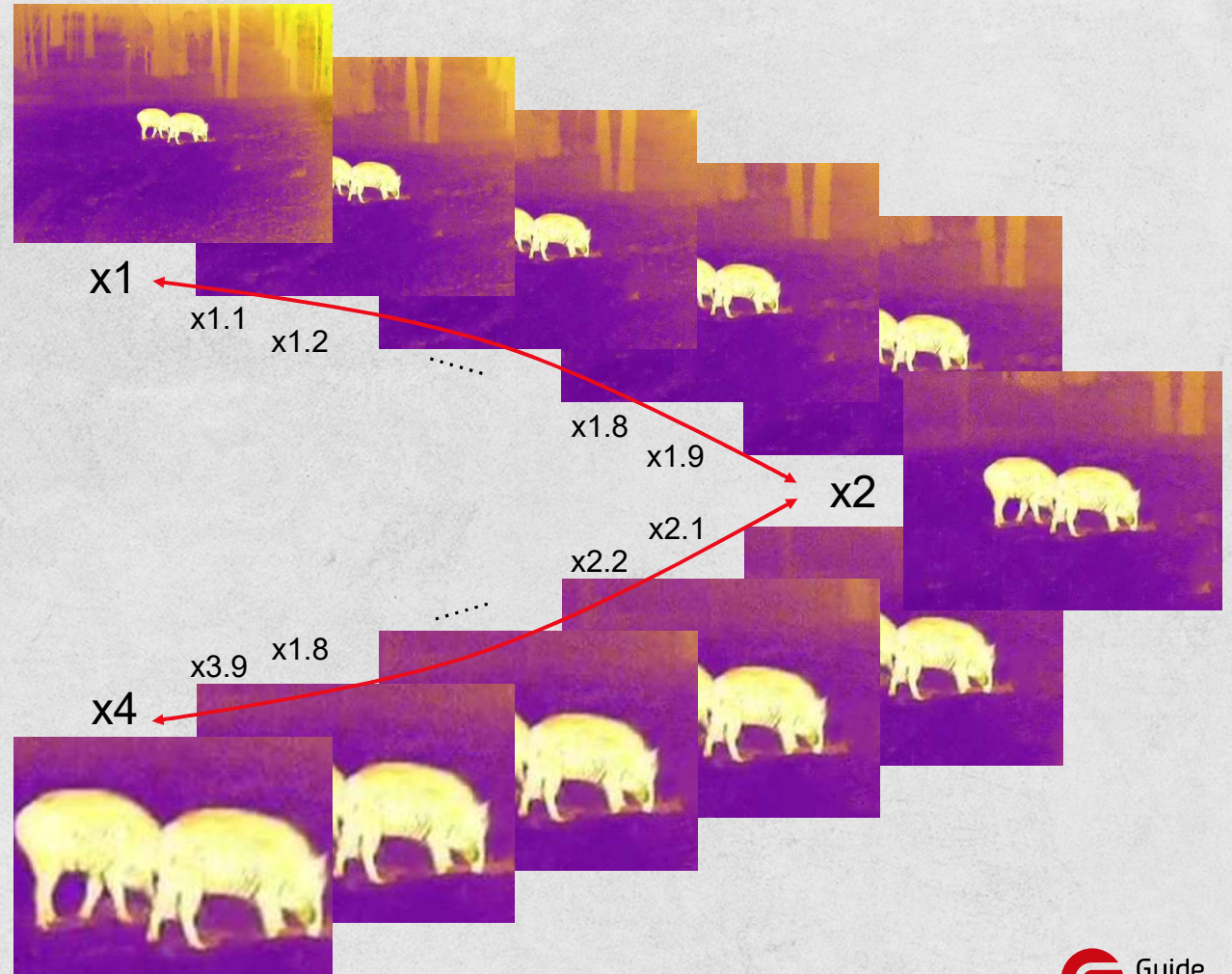
Well-designed PIP mode, highlighting the target

PIP mode, Identify the location of the target instantly by PIP Mode even in outdoor



Smooth Zoom For Flexible Searching

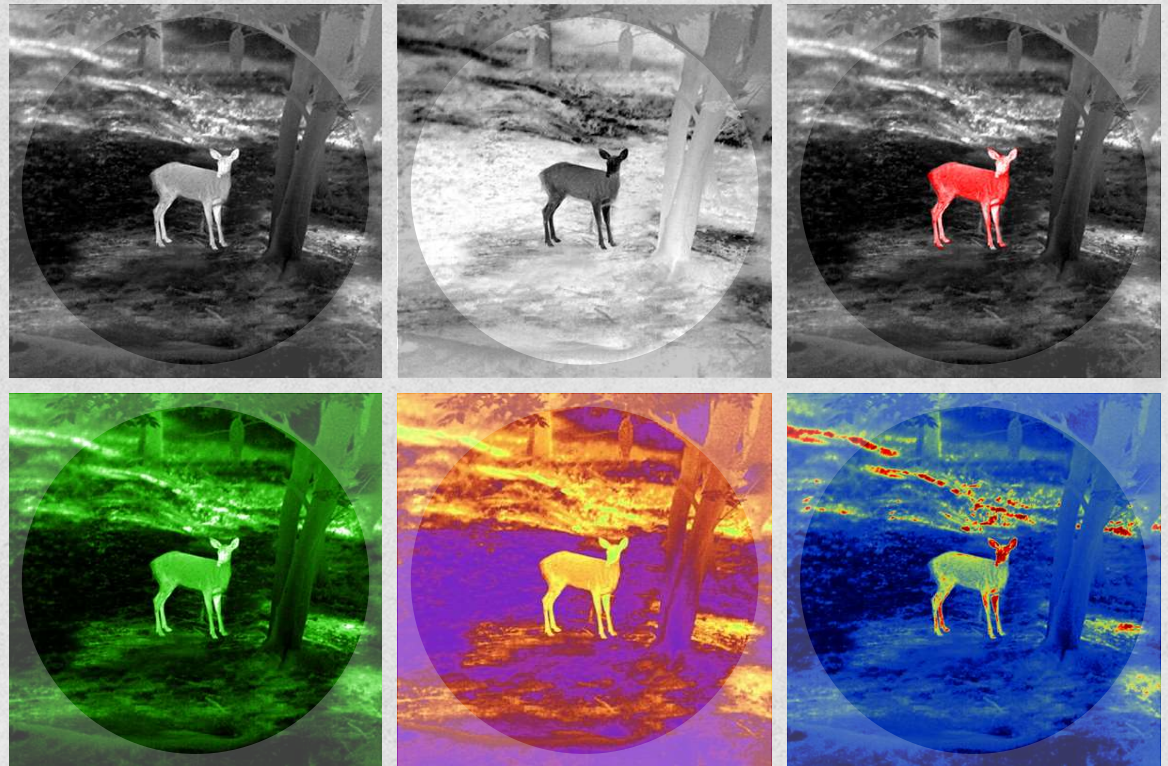
Long press the up/down button to smoothly zoom in and zoom out. Make the search more flexible and pinpoint the target more quickly while hunting.



Multiple Color Palettes to Highlight the Target

Six color palettes: white hot, black hot, red hot, green hot, iron red, blue heat.

Support one-button switch to identify the location of the target instantly, helping to achieve all-weather observations.



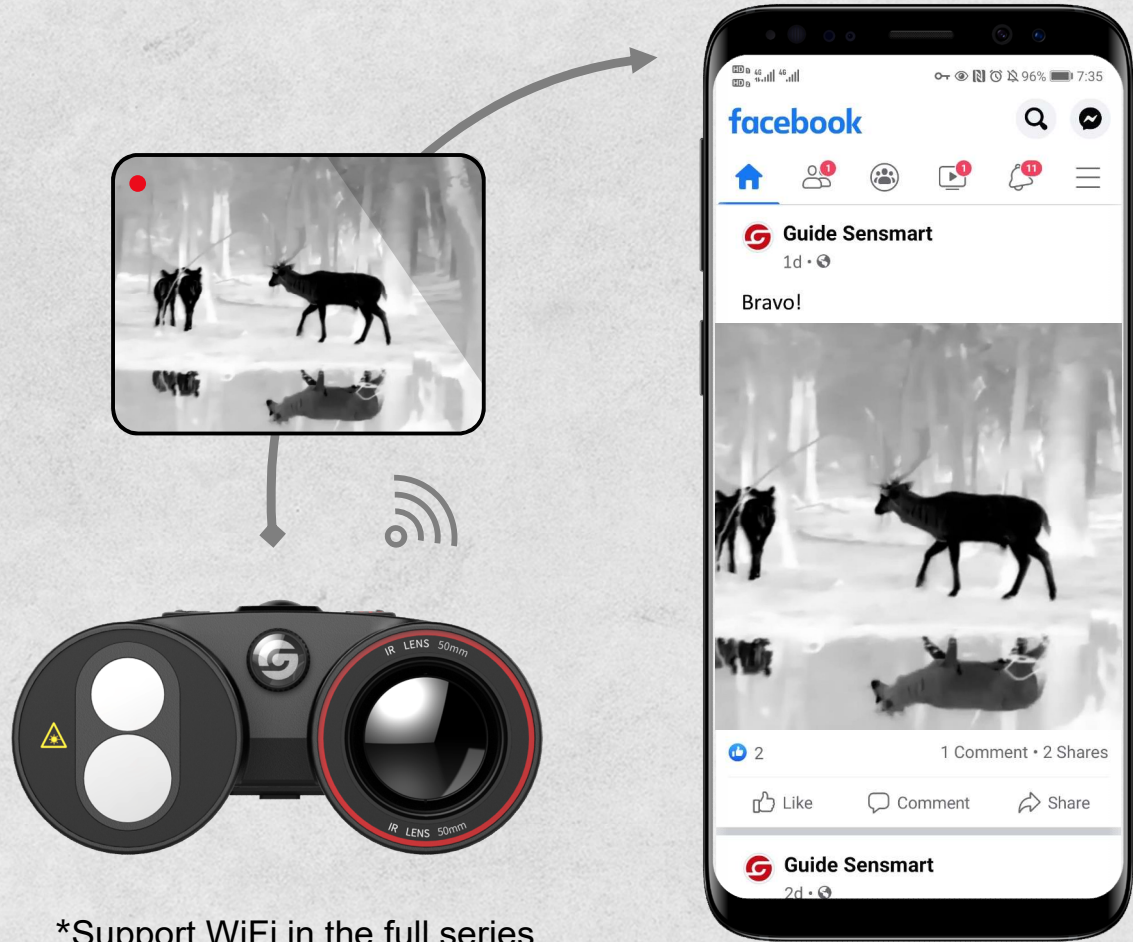
Multiple scene modes, Highlight Target Clearly

“Enhance/Highlight/Natural” can be quickly switched by one button, the image can be adaptively adjusted for different scenes , “Enhance/Highlight” can effectively reduce image impurities to highlight the target.



Photo and Video Recording

Support photos and videos, recording wonderful moments at any time. Realize remote control, live image and video transmission via **WIFI** connection, can share to your social media by **APP**.



IP66, 1-meter Drop test

With IP66 waterproof-rated for protection from heavy-rainfall, dust, and impact. Working temperature is $-30^{\circ}\text{C}\sim 50^{\circ}\text{C}$, suitable for all kinds of harsh weather. It also passed UN38.3 battery certification, RoHS, CE, FCC certification, etc. Quality guaranteed



More Advantages



Removable shading
eye blinders



Adjustable
diopter -4~ + 2



6hrs
Operating time



GPS, Compass and
other sensors

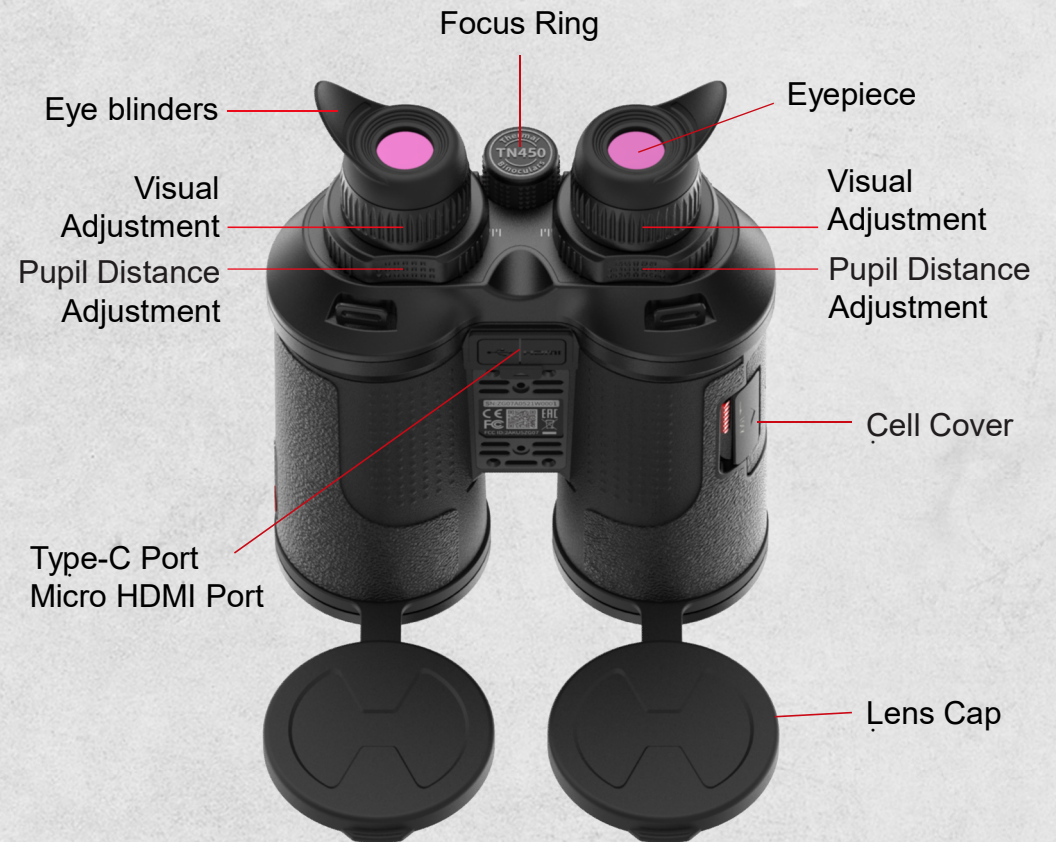


Wireless
Remote Control



Support Multiple
Languages

Component illustration



Accessories Introduction

www.guideir.com



Battery



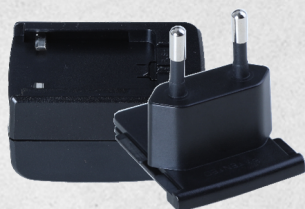
Charger



Type-C Cable



Micro HDMI Cable



Power Adapter



Carry Bag



Shoulder Strap




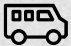
Remote Control
(Optional)

Specifications

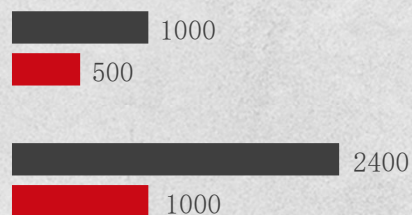
Model	TN430	TN450	TN630	TN650
Detector Type	400×300 @17μm, VOx		640×480@12μm, VOx	
Focal Length	35mm/F1.2	50mm/F1.2	35mm/F1.2	50mm/F1.2
FOV	11.1°×8.3°	7.8°×5.8°	12.5°×9.5°	8.8°×6.6°
Magnification	2.3X~9.2X	3.2X~12.8X	2.0X~16X	2.8X~22.4X
Frame Rate	50Hz			
Digital Zoom	1X~4X (Smooth zoom)		1X~8X (Smooth zoom)	
Photo	√	√	√	√
Video	√	√	√	√
Laser Ranging	Single ranging or continuous ranging			
Wi-Fi/APP	Wi-Fi share photo and video, also can controlled by app (IOS & Android)			
Working Time	≥6h			
Operating Temperature	-10°C ~ 50°C			
Encapsulation	IP66, 1-meter drop test			
Certificate	UN38.3 (Battery certificate), RoHS, CE, FCC, EAC			
Weight	860g	880g	860g	880g
Dimensions	162mm×146mm×70mm			

Detection & Recognition Range

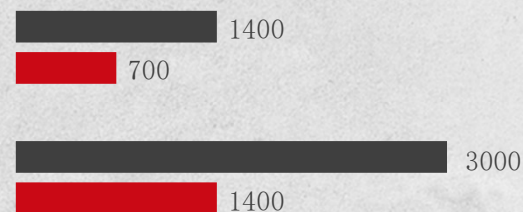
Human 
1.8m×0.5m


Vehicle 
2.3m×2.3m


TN430



TN450



Human 
1.8m×0.5m

Vehicle 
2.3m×2.3m

TN630



TN650



Detection Recognition Unit: m

Applications

www.guideir.com



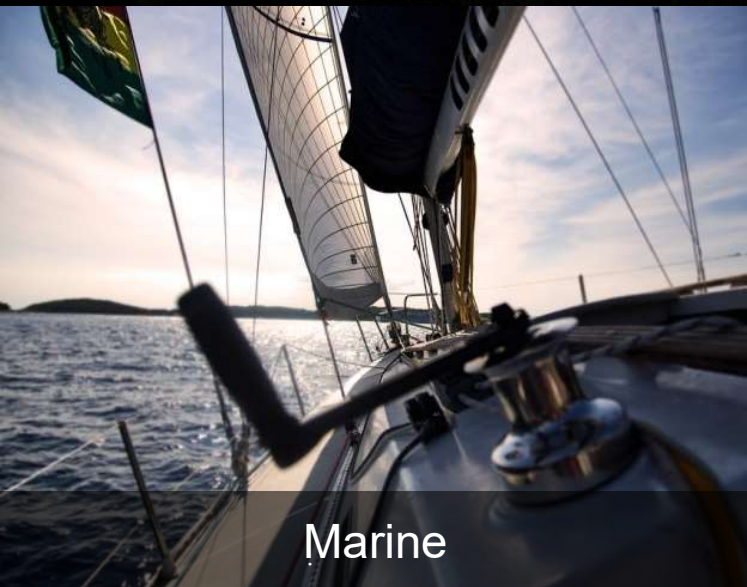
Outdoor



Hunting



Wild Adventure



Marine



Security




Law Enforcement


Thanks!

Guide Sensmart Tech Co., Ltd.

Loeffelholzstrasse 20, Haus 12 Eingang Nord, 90441 Nuremberg, Germany

T +49 911 2170 7934 E enquiry@guide-infrared.com

 @GuideSensmart

 @GuideSensmart

www.guideir.com

